

PN IM3451

PRR1-PE

R1.302.12

**100 tests
20 µL/test**



IO Test®
Conjugated Antibodies

For Research Use Only. Not For Use In Diagnostic Procedures.

SPECIFICITY

The poliovirus receptor (PVR/CD155), the PRR1 (Poliovirus Receptor Related 1), and the PRR2 (Poliovirus Receptor Related 2) define a new family of human antigens belonging to the immunoglobulin (Ig) superfamily. Among the three proteins, CD155 and PRR2 are more closely related (1).

The PRR1 antigen is an integral membrane protein composed by three Ig-like extracellular domains: one V-type domain proximal to the cell membrane, and two C2-type domains distal to the cell membrane.

On peripheral whole blood, the PRR1 molecule is mainly expressed at the surface of the myelomonocytic lineages and a subset of erythrocytes (Glycophorin A-positive) (2). The PRR1 molecule is also detected on the membrane of endothelial cells (2).

Among the CD34 positive cells from bone marrow, the PRR1 molecule is expressed in the majority of the CD33, CD14, and Glycophorin A expressing cells, and on a subset of CD41 subpopulation (2).

The R1.302.12 monoclonal antibody was studied during the 6th International Workshop on Human Leucocytes Differentiation Antigen held in Kobe, Japan, in 1996 (WS Code: MA67, Section M). It has not been assigned to a novel cluster of differentiation due to its uniqueness (3).

REAGENT

Clone R1.302.12
Isotype IgG1 (Kappa), mouse
Immunogen TF1 Cell Line
Hybridoma X63 x Balb/c
Source Ascites fluid
Purification Ion exchange or affinity chromatography
Conjugation R-phycoerythrin (PE) is conjugated at 0.5 - 1.5 moles of PE per mole of Ig.
Excitation wavelength: 488 nm
Maximum emission wavelength: 575 nm
Main emission color: Orange-red
Buffer 2 mg/mL bovine serum albumin in phosphate-buffered saline containing 0.1% sodium azide.

APPLICATION

Flow cytometry:
Research Studies of Poliovirus Receptor and associated molecules.
Research studies of hematopoiesis, and hematopoietic progenitor cells.

STATEMENT OF WARNINGS

1. This reagent contains 0.1% sodium azide. Sodium azide under acid conditions yields hydrazoic acid, an extremely toxic compound. Azide compounds should be flushed with running water while being discarded. These precautions are recommended to avoid deposits in metal piping in which explosive conditions can develop. If skin or eye contact occurs, wash excessively with water.

2. Specimens, samples and all material coming in contact with them should be handled as if capable of transmitting infection and disposed of with proper precautions.
3. Never pipet by mouth and avoid contact of samples with skin and mucous membranes
4. Do not use antibody beyond the expiration date on the label.
5. Do not expose reagents to strong light during storage or incubation.
6. Avoid microbial contamination of reagents or incorrect results might occur.

STORAGE CONDITIONS AND STABILITY

Each reagent is stable up to the expiration date when stored at 2 - 8°C. Do not freeze. Minimize exposure to light.

REAGENT PREPARATION

No reconstitution is necessary. This monoclonal antibody may be used directly from the vial. Bring reagent to 20 - 25°C prior to use.

PROCEDURE

This reagent is designed for flow cytometry.

Assay volume: 20 µL per 5×10^5 cells in one test, or per 100 µL whole blood.

A wash is required to yield optimal results.

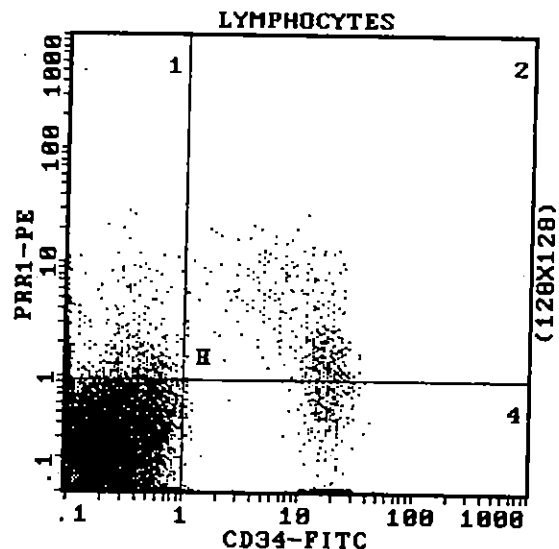
EXAMPLE DATA

The diagrams below are biparametric representations (Fluorescence Intensity versus Fluorescence Intensity) of an apheresis sample. Staining is with PRR1-PE monoclonal antibody (PN IM3451) and CD34-FITC (PN IM1870). Gate is on lymphocytes. The isotypic control labeling is not shown.

Figure 1:

Acquisition is with a COULTER® EPICS® XL™ flow cytometer. Analysis is with the XL System II™ software.

2: A



BON A TIRER

17 JAN. 2000

N° CONTROLE DE CHANGEMENT:

SIGNATURE: AC-991354

3451EX020799 Vers. 01/ 17/01/00 AC-991354



COULTER

PARTNERS IN CELL ANALYSIS



IMMUNOTECH
A COULTER COMPANY

PN IM3451

PRR1-PE

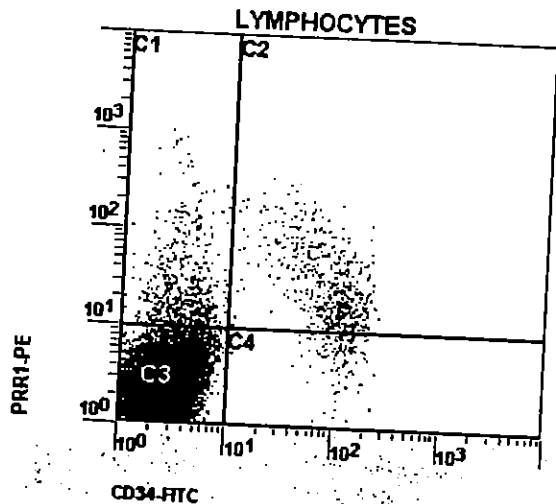
R1.302.12

**100 tests
20 µL/test**

For Research Use Only. Not For Use In Diagnostic Procedures.

Figure 2 :

Acquisition is with a Becton Dickinson FACSCalibur™ flow cytometer equipped with CellQuest™ software. Analysis is with EXPO™ v2.0 Analysis software (Coulter PN 6605433).



SELECTED RESEARCH REFERENCES

1. [5446] Eberlé, F., Dubreuil, P., Mattei, M-G., Devilard, E., Lopez, M., "The human PRR2 gene, related to the human poliovirus receptor gene (PVR), is the true homolog of the murine MPH gene", 1995, *Gene*, 159, 267-272.
2. [5444] Lopez, M., Jordier, F., Bardin, F., Coulombel, L., Chabannon, C., Dubreuil, P., "CD155 Workshop: Identification of a new class of Ig superfamily antigens expressed in hemopoiesis", 1997, *Leucocyte Typing VI, White Cell Differentiation Antigens*. Kishimoto, T., et al, Eds., Garland Publishing, Inc., 1081-1083.
3. [5449] Freistadt, M.S., Eberle, K.E., "CD155 (poliovirus receptor) Workshop panel report", 1997, *Leucocyte Typing VI, White Cell Differentiation Antigens*. Kishimoto, T., et al, Eds., Garland Publishing, Inc., 1075-1080.