

PN IM3068 Monoclonal Antibody RAT CD11b-FITC

Form	FITC	Clone	OX-42
Quantity	100 tests	Isotype	IgG2a
Presentation	Liquid 1 mL	Species	mouse
Purity	Purified IgG		

For Research Use Only. Not For Use In Diagnostic Procedures.

SPECIFICITY

The OX-42 antibody reacts with the alpha chain (CD11b, also called MAC-1 and CR3 complement receptor) of rat CD11b/CD18 molecule (1, 2). It stains most macro-phages, dendritic cells, granulocytes and cells with the morphology of microglia in brain (3, 4).

APPLICATIONS

This antibody is designed for flow cytometry.

BUFFER

This antibody is supplied in phosphate-buffered saline (PBS) pH 7.4, containing 0.1% sodium azide (NaN₃) and 1% bovine serum albumin (BSA).

STORAGE CONDITIONS AND STABILITY

This reagent is stable up to the expiration date when stored at 2 - 8°C. Avoid repeated freezing and thawing. Minimize exposure to light and warmth.

CONJUGATION

Fluorescein isothiocyanate (FITC) is conjugated at 7.9 moles of FITC per mole of IgG.

Excitation wavelength: 488 nm

Maximum emission wavelength: 525 nm

Main emission color: Green

REAGENT PREPARATION

No reconstitution is necessary. This monoclonal antibody may be used directly from the vial. Bring reagent to 20 - 25°C prior to use.

PROCEDURE

Flow Cytometry: Use 10 µL to label 10⁶ cells.

It is recommended that the user titrates the antibody for use in her/his own system using appropriate negative / positive controls.

STATEMENT OF WARNINGS

1. This reagent contains 0.1% sodium azide. Sodium azide under acid conditions yields hydrazoic acid, an extremely toxic compound. Azide compounds should be flushed with running water while being discarded. These precautions are recommended to avoid deposits in metal piping in which explosive conditions can develop. If skin or eye contact occurs, wash excessively with water.
2. Never pipet by mouth.
3. Do not use antibody beyond the expiration date on the label.

4. Do not expose reagents to strong light during storage or incubation.
5. Avoid microbial contamination of reagents or incorrect results might occur.

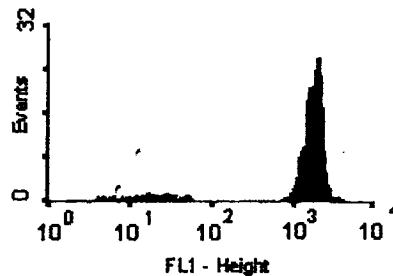
OTHER CONJUGATES AVAILABLE

CD11b (IM3067)

CD11b-PE (IM3069)

EXAMPLE DATA

The graph below shows representative results of staining obtained with this antibody on rat peritoneal macrophages.



SELECTED RESEARCH REFERENCES

1. [4379] Issekutz, A.C., Issekutz, T.B., "The contribution of LFA-1 (CD11a/CD18) and MAC-1 (CD11b/CD18) to the in vivo migration of polymorphonuclear leucocytes to inflammatory reactions in the rat", 1992, Immunology, 76, 655-661.
2. [4422] Issekutz, A.C., Issekutz, T.B., "Monocyte migration to arthritis in the rat utilizes both CD11/CD18 and very late activation antigen 4 integrin mechanisms", 1995, J. Exp. Med., 181, 1197-1203.
3. [4382] Robinson, A.P., White, T.M., Mason, D.W., "Macrophage heterogeneity in the rat as delineated by two monoclonal antibodies MRC OX-41 and MRC OX-42, the latter recognizing complement receptor type 3", 1986, Immunology, 57, 239-247.
4. [4416] Milligan, C.E., Cunningham, T.J., Levitt, P., "Differential immunochemical markers reveal the normal distribution of brain macrophages and microglia in the developing rat brain", 1991, J. Comp. Neurol., 314, 125-135.

3068EX220399 30/03/99 AC-99145