

**PN IM2816** Monoclonal Antibody **MOUSE CD45 - FITC**

<b>Form</b>	FITC	<b>Clone</b>	YW62.3
<b>Quantity</b>	100t	<b>Isotype</b>	IgG2b
<b>Presentation</b>	Liquid 1mL	<b>Species</b>	rat
<b>Purity</b>	Purified IgG		

For Research Use Only. Not for use in diagnostic procedures.

**SPECIFICITY**

Clone YW62.3 does react with the family of Leucocyte Common Antigen (LCA, CD45). The members of this family are transmembrane glycoproteins and are expressed in most hematopoietic cells, with the exception of platelets and red blood cells (1). These molecules show heterogeneity in molecular weight, glycosylation and antigenicity patterns. The molecular isoforms are generated by alternative splicing of a single-gene encoded on the chromosome 1. (2)

**BUFFER**

This antibody is supplied in phosphate buffered saline pH7.4, containing 0.1% sodium azide and 1% bovine serum albumin

**STORAGE CONDITIONS AND STABILITY**

Each reagent is stable up to the expiration date when stored at 2-8 °C. Avoid repeated freezing and thawing. Minimize exposure to light and warmth.

**CONJUGATION**

FITC: Fluorescein isothiocyanate (FITC) is conjugated at 6.2 moles of FITC per mole of IgG.

Excitation wavelength: 488 nm

Maximum emission wavelength: 525 nm

Main emission color: Green

**REAGENT PREPARATION**

No reconstitution is necessary. This monoclonal antibody may be used directly from the vial. Bring reagent to 20 - 25 °C prior to use.

**PROCEDURE**

Flow Cytometry: Use 10µL to label 10<sup>6</sup> cells or 100µL of whole blood.

It is recommended that the user titrates the antibody for use in her/his own system using appropriate negative/positive controls.

**STATEMENT OF WARNINGS**

1. This reagent contains 0.1% sodium azide. Sodium azide under acid conditions yields hydrazoic acid, an extremely toxic compound. Azide compounds should be flushed with running water while being discarded.

These precautions are recommended to avoid deposits in metal piping in which explosive conditions can develop. If skin or eye contact occurs, wash excessively with water.

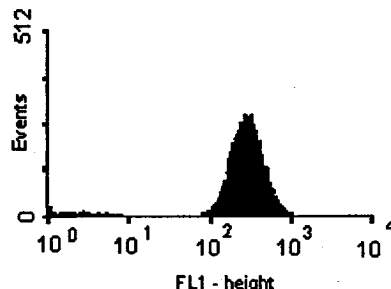
2. Never pipet by mouth.
3. Do not use antibody beyond the expiration date on the label.
4. Do not expose reagents to strong light during storage or incubation.
5. Avoid microbial contamination of reagents or incorrect results might occur.

**OTHER CONJUGATES AVAILABLE**

- CD45 (IM2815)
- CD45 - PE (IM2817)

**EXAMPLE DATA**

The graph below shows representative results of staining obtained with this antibody on mouse spleen cells.



**SELECTED RESEARCH REFERENCES**

- 1-[4300] Hathcock, K.S., Hirano, H., Hodes, R.J., "CD45 expression by murine B cells and T cells : alteration of CD45 isoforms in subpopulations of activated B cells", 1993, Immunol. Res., 12, 21-36.
- 2-[4297] Zebedee, S.L., Barritt, D.S., Raschke, W.C., "Comparison of mouse Ly5a and Ly5b leucocyte common antigen alleles", 1991, Develop. Immunol., 1, 243-254.

2816EX030698 01/06/98 AC-98109

