

PN IM2780 Monoclonal Antibody **MOUSE CD8 - PE**

Form	PE	Clone	KT15
Quantity	100t	Isotype	IgG2a
Presentation	Freeze-dried	Species	rat
Purity	Purified IgG		

For Research Use Only. Not for use in diagnostic procedures.

SPECIFICITY

KT15 recognises mouse CD8 (Ly2.1 and Ly2.2 alleles) It reacts with the CD8 α chain (non polymorphic) which is expressed on T cells.

BUFFER

This antibody is supplied in phosphate buffered saline pH7.4, containing 0.1% sodium azide and 1% bovine serum albumin

STORAGE CONDITIONS AND STABILITY

Each reagent is stable up to the expiration date when stored at 2-8 °C. Avoid repeated freezing and thawing. Minimize exposure to light and warmth.

CONJUGATION

PE. R-phycoerythrin (PE) is conjugated at 0.7-1 mole of PE per mole of IgG.
 Excitation wavelength 488 nm
 Maximum emission wavelength 575 nm
 Main emission color: Orange-red

REAGENT PREPARATION

This monoclonal antibody is provided in freeze-dried form and must be reconstituted with 1mL of distilled water. Bring reagent to 20 - 25 °C prior to use.

PROCEDURE

Flow Cytometry: Use 10 μ L to label 10⁶ cells.

It is recommended that the user titrates the antibody for use in her/his own system using appropriate negative/positive controls

STATEMENT OF WARNINGS

1. This reagent contains 0.1% sodium azide. Sodium azide under acid conditions yields hydrazoic acid, an extremely toxic compound. Azide compounds should be flushed with running water while being discarded. These precautions are recommended to avoid deposits in metal piping in which explosive conditions can develop. If skin or eye contact occurs, wash excessively with water.
2. Never pipet by mouth.
3. Do not use antibody beyond the expiration date on the label.

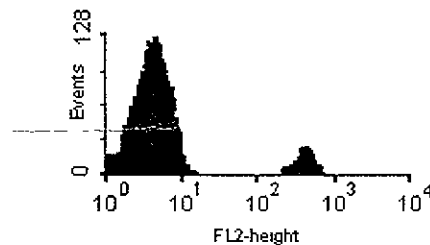
4. Do not expose reagents to strong light during storage or incubation.
5. Avoid microbial contamination of reagents or incorrect results might occur.

OTHER CONJUGATES AVAILABLE

- CD8 (IM2777)
- CD8 - FITC (IM2778)
- CD8 - BIOTIN (IM2779)

EXAMPLE DATA

The graph below shows representative results of staining obtained with this antibody on mouse peripheral blood lymphocytes



SELECTED RESEARCH REFERENCES

1-[4216] Whiteland, J.L., et al., "Immunohistochemical detection of T cell subsets and other leukocytes in paraffin-embedded rat and mouse tissues with monoclonal antibodies", 1995, J. Histochem. Cytochem., 43, 313-320.

2780EX290598 01/06/98 AC-98109