

**PN IM2778**      Monoclonal Antibody      **MOUSE CD8 - FITC**

<b>Form</b>	FITC	<b>Clone</b>	KT15
<b>Quantity</b>	100t	<b>Isotype</b>	IgG2a
<b>Presentation</b>	Liquid 1mL	<b>Species</b>	rat
<b>Purity</b>	Purified IgG		

For Research Use Only. Not for use in diagnostic procedures.

**SPECIFICITY**

KT15 recognises mouse CD8 (Ly2.1 and Ly2.2 alleles). It reacts with the CD8  $\alpha$  chain (non polymorphic) which is expressed on T cells.

**BUFFER**

This antibody is supplied in phosphate buffered saline pH7.4, containing 0.1% sodium azide and 1% bovine serum albumin

**STORAGE CONDITIONS AND STABILITY**

Each reagent is stable up to the expiration date when stored at 2-8 °C. Avoid repeated freezing and thawing. Minimize exposure to light and warmth.

**CONJUGATION**

FITC: Fluorescein isothiocyanate (FITC) is conjugated at 3 - 7 moles of FITC per mole of IgG  
 Excitation wavelength: 488 nm  
 Maximum emission wavelength: 525 nm  
 Main emission color: Green

**REAGENT PREPARATION**

No reconstitution is necessary. This monoclonal antibody may be used directly from the vial. Bring reagent to 20 - 25 °C prior to use.

**PROCEDURE**

Flow Cytometry: Use 10 $\mu$ L to label 10<sup>6</sup> cells or 100 $\mu$ L of whole blood.

It is recommended that the user titrates the antibody for use in her/his own system using appropriate negative/positive controls.

**STATEMENT OF WARNINGS**

1. This reagent contains 0.1% sodium azide. Sodium azide under acid conditions yields hydrazoic acid, an extremely toxic compound. Azide compounds should be flushed with running water while being discarded. These precautions are recommended to avoid deposits in metal piping in which explosive conditions can develop. If skin or eye contact occurs, wash excessively with water.
2. Never pipet by mouth.
3. Do not use antibody beyond the expiration date on the label.

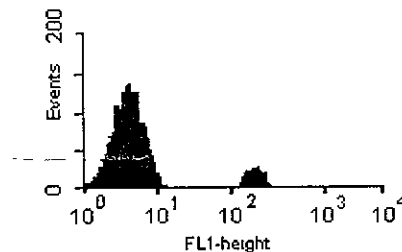
4. Do not expose reagents to strong light during storage or incubation.
5. Avoid microbial contamination of reagents or incorrect results might occur.

**OTHER CONJUGATES AVAILABLE**

- CD8 (IM2777)
- CD8 - PE (IM2780)
- CD8 - BIOTIN (IM2779)

**EXAMPLE DATA**

The graph below shows representative results of staining obtained with this antibody on mouse peripheral blood lymphocytes.



**SELECTED RESEARCH REFERENCES**

- 1-[4216] Whiteland, J.L., et al., "Immunohistochemical detection of T cell subsets and other leukocytes in paraffin-embedded rat and mouse tissues with monoclonal antibodies", 1995, J. Histochem. Cytochem., 43, 313-320.

2778EX290598 01/06/98 AC-98109