

# Monoclonal Antibody Anti-Mouse CD3-FITC

PN IM2768 – Liquid – 100 tests – Clone KT3

For Research Use Only. Not for use in diagnostic procedures.

## SPECIFICITY

KT3 specifically recognises the mouse CD3 antigen, which is expressed by mature T cells (1, 2).

## REAGENT

Conjugated Monoclonal Antibody Anti-Mouse CD3-FITC  
PN IM2768 – Liquid 100 tests

**Clone** KT3  
**Isotype** IgG2a  
**Species** Rat  
**Purification** Purified IgG  
**Conjugation** Fluorescein isothiocyanate (FITC) is conjugated at 3 – 7 moles of FITC per mole of Ig.

Excitation wavelength: 488 nm  
Maximum emission wavelength: 525 nm  
Main emission color: green

## REAGENT CONTENTS

This reagent is provided in phosphate-buffered saline (PBS) pH 7.2, containing bovine serum albumin and sodium azide.

*Please contact Customer Support for additional information.*

## STATEMENT OF WARNINGS

1. This reagent contains 0.1% sodium azide. Sodium azide under acid conditions yields hydrazoic acid, an extremely toxic compound. Azide compounds should be flushed with running water while being discarded. These precautions are recommended to avoid deposits in metal piping in which explosive conditions can develop. If skin or eye contact occurs, wash excessively with water.
2. Specimens, samples and all material coming in contact with them should be handled as if capable of transmitting infection and disposed of with proper precautions.

3. Never pipet by mouth and avoid contact of samples with skin and mucous membranes.
4. Do not use reagent beyond the expiration date on the vial label.
5. Avoid microbial contamination of reagent or erroneous results may occur.
6. Use general good laboratory practices when handling this reagent.

## STORAGE CONDITIONS AND STABILITY

This reagent is stable up to the expiration date on the vial label when stored at 2 – 8°C. Minimize exposure to light and warmth.

## REAGENT PREPARATION

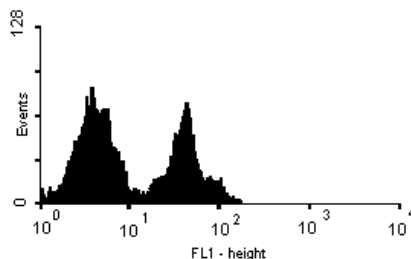
No reconstitution is necessary. This monoclonal antibody may be used directly from the vial. Bring reagent to 20 – 25 °C prior to use.

## PROCEDURE

Flow Cytometry: 10 µL is the usual amount of reagent required for 1 x 10<sup>6</sup> cells or 100 µL of whole blood.

## EXAMPLE DATA

The graph below shows representative results of staining obtained with this antibody on mouse peripheral blood lymphocytes.



## SELECTED RESEARCH REFERENCES

1. Tomonari, K., Lovering, E., "T-Cell receptor-specific monoclonal antibodies against a Vβ11 positive mouse T-Cell clone", 1988, Immunogenetics, 28, 445-451.
2. Tomonari, K., "A rat antibody against a structure functionally related to the mouse T-cell receptor/T3 complex", 1988, Immunogenetics, 28, 455-458

For additional information in the USA, call 800-526-7694.

Outside the USA, contact your local Beckman Coulter representative.

[www.beckmancoulter.com](http://www.beckmancoulter.com)

## TRADEMARKS

Beckman Coulter and the Beckman Coulter logo are trademarks of Beckman Coulter, Inc.

Manufactured for:

Immunotech, a Beckman Coulter Company  
130, avenue de Lattre de Tassigny, B.P. 177  
13276 Marseille Cedex 9, France

©2008 Beckman Coulter, Inc.  
All Rights Reserved.