

REF 6602137 – 100 tests

PN 178462-AA



	T11
Specificity	CD2
Clone	SFCI3P2H9
Hybridoma	NS/1-AG4 x BALB/c
Immunogen	Tumor cells from a patient with T cell CLL
Ig Chain	IgG1
Species	Mouse
Source	Mouse ascites fluid
Purification	Affinity chromatography
Fluorescence	Non Applicable
Conjugation	Non Applicable
Molar Ratio	Non Applicable
Scatter Detection	Forward and/or side

MONOCLONAL ANTIBODY

For In Vitro Diagnostic Use

INTENDED USE

COULTER CLONE T11 (CD2) is a murine monoclonal antibody reagent. In conjunction with a fluorescent label, it is used to identify and enumerate the percentage of CD2 (T11+) lymphocytes in whole blood or mononuclear cell preparations by fluorescence microscopy or flow cytometry.

SUMMARY AND EXPLANATION

The lymphocyte population of human peripheral blood is composed of three cell types - T (thymus-derived), B (bone marrow-derived), and null cells. These cell types are morphologically indistinguishable by microscopy but can be identified by characteristic antigenic differences in their cell membranes.

T11

The CD2 antigen is associated with E-rosette receptor and has a molecular weight of 50 kd.^{1,2} It is an early, lineage-specific 'pan T cell' surface antigen and normally is present on some bone marrow prothymocytes, on over 95% of thymocytes, on all peripheral T lymphocytes and on a subpopulation of natural killer cells.^{1,2,5} Once present, the CD2 antigen is expressed continuously throughout T lymphocytes differentiation.⁵ The CD2 antigen is not detected on peripheral blood B lymphocytes, monocytes, granulocytes or platelets.²

CLINICAL RELEVANCE

Decreased numbers of T lymphocytes are found in patients with autoimmune disorders including multiple sclerosis, systemic lupus erythematosus, and eczema.⁶ Thymic aplasia (DiGeorge syndrome) is associated with a decreased number of T lymphocytes. Increased numbers of T lymphocytes are noted in patients with acute infectious mononucleosis and some forms of acquired agammaglobulinemia due to the presence of activated suppressor cells.⁶

PRINCIPLES OF TEST

This test depends on the ability of a monoclonal antibody to bind to the surface of cells expressing discrete antigenic determinants. COULTER CLONE T11 is a murine monoclonal antibody specific for a cell surface antigen. Specific cell staining is accomplished by incubating peripheral blood cells with the monoclonal antibody, washing the cells to remove unbound antibody, and then incubating the cells with fluorescein-conjugated goat antiserum to mouse immunoglobulin. The percentage of positively-stained lymphocytes is determined by either fluorescence microscopy or flow cytometry. Isotypic controls and a second antibody control are used to assess nonspecific background fluorescence.

REAGENTS

See table above.

REAGENT CONTENTS

The antibody concentration is 5.0 µg/test.

The final concentration of nonantibody reagents when reconstituted to 500 µL is 0.2% BSA, 0.01 M potassium phosphate, 0.15 M NaCl, and 0.1% NaN₃.

STATEMENT OF WARNINGS

1. These reagents contain sodium azide. Sodium azide under acid conditions yields hydrazoic acid, an extremely toxic compound. Azide compounds should be flushed with running water while being discarded. These precautions are recommended to avoid deposits in metal piping in which explosive conditions can develop. If skin or eye contact occurs, wash excessively with water.
2. This procedure requires the use of fixative (formaldehyde). Inhalation or ingestion is harmful and may be fatal. If swallowed, induce vomiting. If skin or eye contact occurs, wash excessively with water.
3. Do not use antibody beyond the expiration date on label.
4. Samples and all material coming in contact with them should be handled as if capable of transmitting infection, and disposed of with proper precautions.
5. Never pipet by mouth and avoid contact of samples with skin and mucous membranes.
6. Do not expose reagents to strong light during storage or incubation.
7. Incubation or centrifuge times or temperatures other than those specified may give erroneous results.
8. Avoid microbial contamination of reagents or incorrect results may occur.
9. Harmful if swallowed.
10. After contact with skin, wash immediately with plenty of water.

RECONSTITUTION

1. Reconstitute the lyophilized COULTER CLONE T11, GAM-FITC, or isotypic control by adding 500 µL of distilled water to each. This makes a stock solution.
2. Centrifuge the stock solutions at 100,000 x g for 10 minutes for optimization of staining results.
3. Prepare working solutions* for the above reagents as follows:

	*Volume of Reagents or Isotypic Control Stock Solution/Test	**Volume of PBS/Test
Vial Size		
100 tests	5 µL	Add 195 µL

*Diluted reagent must be used the same day as prepared.
**PBS - Phosphate Buffered Saline

STORAGE CONDITIONS

1. Unreconstituted lyophilized T11 product may be stored at 2-8°C until date printed on the label.
2. Storage conditions of reconstituted T11 stock solution: Reconstituted according to the above procedure and stored at 2-8°C.....6 months
Reconstituted and stored according to freezing procedure below -70°C.....1 year
3. Avoid repeated freeze/thaw cycles. This will denature the antibody protein.
4. Do not store in a self-defrosting freezer.
5. Do not expose reagents to strong light during storage or incubation.
6. All reagents should be brought to 20-25°C prior to use.
7. If all reconstituted reagent is not to be used within 6 months, follow the Freezing Procedure below.

FREEZING PROCEDURE FOR RECONSTITUTED PRODUCTS MATERIAL SUPPLIED

COULTER CLONE T11 Monoclonal Antibody

REAGENTS REQUIRED BUT NOT SUPPLIED

Phosphate Buffered Saline (PBS), pH 7.2, PN 6603369
PBS containing 2% heat-inactivated fetal or newborn calf serum (2 mL calf serum diluted to 100 mL with PBS)

PROCEDURE

Reconstitute the lyophilized COULTER CLONE monoclonal antibody by adding 500 µL of distilled water as described previously. Dilute the reconstituted COULTER CLONE monoclonal antibody with PBS containing 2% heat-inactivated calf serum prior to the freezing as follows:

	*Volume of Reconstituted Monoclonal Antibody/ Test	**Volume of PBS With 2% Calf Serum/Test
Vial Size		
100 tests	5 µL	100 µL

*This volume may be frozen in multiple test volumes.
**This yields one-half the working dilution of the monoclonal antibody.

Freeze the diluted monoclonal antibody. Stable for 1 year when reconstituted, stabilized with a solution of fetal or newborn calf serum in PBS, and stored at -70°C. Do not freeze and thaw repeatedly. Store in aliquots.

Prior to use, allow the diluted monoclonal antibody to reach 20-25°C. Dilute each test volume with PBS without 2% calf serum and mix well. See chart above for volume.

EVIDENCE OF DETERIORATION

Any change in the physical appearance of the reagents*, or any major variation in values for control samples may indicate deterioration and the reagents should not be used. If the lyophilized material appears moist, do not use.

*Normal Appearance of Reagents

Lyophilized - white plug

Reconstituted - clear, colorless liquid

SPECIMEN COLLECTION AND PREPARATION

SPECIMEN COLLECTION

CAUTION: The stability of blood samples is quite variable. For optimal results, start the assay within 6 hours of venipuncture. Unstained, anticoagulated blood should remain at 20-25°C until processing is begun. Do not refrigerate.

Collect a venous blood sample aseptically by venipuncture into a blood collection tube using an appropriate anticoagulant (EDTA is recommended). For detailed information on the collection of whole blood by venipuncture and interfering conditions, refer to "Procedures for the Collection of Diagnostic Blood Specimens by Venipuncture (H3), Approved Edition" published by the Clinical and Laboratory Standards Institute. For each test, 100 µL of whole blood is required. Collect a sufficient amount of blood (1 to 2 mL required per tube) to run the test, control and have autologous plasma for sample dilution, if necessary. A white blood cell count should be performed.

SAMPLE PREPARATION

Whole Blood

To prepare and analyze whole blood samples (1 to 2 mL required per tube), use the appropriate COULTER® Whole Blood Lysing Reagent Kit, and follow the directions in the package insert for lysing and staining whole blood samples.

MONONUCLEAR CELL PREPARATION

MATERIALS REQUIRED BUT NOT SUPPLIED:

Flow cytometer (See Instrument Requirements section) or Fluorescence microscope

Cell counter or hemocytometer

Low-speed, at least 450 x g, refrigerated centrifuge with swinging bucket rotor to hold 15-mL centrifuge tubes

Stopcock grease

Microscope slides (3" x 1" x 1 mm)

Coverslips (24 x 50 mm)

Distilled or deionized water

Ficoll-Paque® or equivalent

Phosphate Buffered Saline (PBS), pH 7.2, PN 6603369

10% Formaldehyde in PBS

PBS containing 2% heat-inactivated fetal or newborn calf serum and 0.01% NaN₃ (2 mL calf serum and 0.1 mL of a 10% NaN₃ solution diluted to 100 mL with PBS), (wash medium)

PBS containing 0.01% NaN₃ (0.1 mL of a 10% NaN₃ solution diluted to 100 mL with PBS), (resuspension medium)

Propidium iodide dissolved at 0.01 mg/mL or 0.05 mg/mL

Acridine orange 0.005 mg/mL

Blood collection tubes with anticoagulant (EDTA is recommended)

Silicizing agent for glassware

15-mL centrifuge tubes

12 x 75 mm test tubes

Transfer pipets

Ice bath

INSTRUMENT REQUIREMENTS

Flow cytometer that provides excitation and measures emission of scatter and fluorescence as specified in the table on page 1 as applicable for your specific product. Users should refer to the manufacturer's instrument manuals for specific instructions for setting PMT voltages and fluorescence compensation prior to analysis.

Mononuclear Cell Preparation Procedure

1. Dilute 4 mL of the whole blood sample 1:2 with 2-8°C PBS in an ice bath.
2. Layer 8 mL of diluted blood over 4 mL of Ficoll-Paque in a 15-mL centrifuge tube.

NOTE: If a larger volume of cells is desired, any number of tubes of blood may be pooled into a large glass tube or flask and treated as above.

3. Centrifuge at 2-8°C at 400-450 x g for 30 minutes. Mononuclear cells should form a visible clean interface between the plasma and the Ficoll-Paque. (See LIMITATIONS #5.)
4. Aspirate and retain the plasma and remove the mononuclear cell layer. Place cells in a clean 15-mL centrifuge tube. Fill the tube with 12-13 mL 2-8°C PBS and gently mix the cells. Centrifuge at 2-8°C at 400-450 x g for 8 minutes. Aspirate carefully and discard the supernatant.
5. Resuspend cells by filling the tube with 12-13 mL 2-8°C PBS, mix gently and centrifuge at 2-8°C at 400-450 x g for 4 minutes. Aspirate carefully and discard the supernatant.
6. Resuspend cells by filling the tube with 12-13 mL 2-8°C PBS, mix gently and centrifuge at 2-8°C at 400-450 x g for 3 minutes. Aspirate carefully and discard the supernatant.
7. Resuspend cells in 2 mL of 2-8°C wash medium or PBS, mix gently and determine cell concentration using a cell counter or hemocytometer. If necessary, add 2-8°C wash medium or PBS, or centrifuge and resuspend in 2-8°C wash medium or PBS, until the final concentration of the mononuclear cell suspension is 1 x 10⁶ cells/mL.
8. Cell viability analysis is performed by one of the following two suggested methods. To ensure maximum viability, analyze stained cells promptly.

a) Viability by Fluorescence Microscopy:

CAUTION: Results may vary due to the type of microscope, light source age of bulb, filter assembly and filter thickness.

1. Place a suspension of approximately 25,000 cells (25 µL of a 1 x 10⁶ cells/mL suspension) onto a microscope slide.
2. Add 10 µL of a 0.01 mg/mL solution of propidium iodide and mix gently by stirring with a pipet tip.
3. Allow to stand for 30 seconds. Add 10 µL of a 0.005 mg/mL solution of acridine orange. Mix gently and allow to stand for 3 seconds.
4. Place a 25 x 50 mm coverslip on the slide avoiding air bubbles, seal with stopcock grease, and examine by fluorescence microscopy.
5. Count 100 cells and report viability as the percentage of viable cells (which appear bright green) divided by viable cells plus nonviable cells (which appear red). If viability is not at least 85%, the cell preparation should not be used.

b) Viability by Flow Cytometry:

Use an instrument that discriminates leukocytes and measures their fluorescence on a cell-by-cell basis.

CAUTION: If the laser on the flow cytometer is misaligned or the gates are improperly set, results may be erroneous.

1. Place 1 x 10⁶ cells into a 12 x 75 mm test tube.
2. Wash one time with 1 mL of 2-8°C resuspension medium centrifuging at 2-8°C at 400-450 x g for 4 minutes.
3. Aspirate carefully and discard the supernatant. Add three drops of 0.05 mg/mL propidium iodide. Allow to stand for 1 minute.
4. Wash two times in 1 mL 2-8°C resuspension medium centrifuging at 2-8°C at 400-450 x g for 4 minutes.
5. Aspirate carefully and discard the supernatant. Resuspend to 1 mL. Analyze on a flow cytometer according to the Product Manual. If viability is not at least 85%, the cell preparation should not be used.

PROCEDURE FOR IMMUNOFLUORESCENCE CELL SURFACE STAINING WITH COULTER CLONE MONOCLONAL ANTIBODY

REAGENTS REQUIRED BUT NOT SUPPLIED

Phosphate Buffered Saline (PBS), pH 7.2, PN 6603369
PBS containing 2% heat-inactivated fetal or newborn calf serum and 0.01% NaN₃ (2 mL calf serum and 0.1 mL of a 10% NaN₃ solution diluted to 100 mL with PBS), (wash medium)

PBS containing 0.01% NaN₃ (0.1 mL of a 10% NaN₃ solution diluted to 100 mL with PBS), (resuspension medium)

10% formaldehyde in PBS

Silicizing agent for glassware

COULTER CLONE GAM-FITC

PN 6602159 - 100 tests (0.5 mL)

COULTER CLONE MslgG1 Isotypic Control

PN 6602872 - 100 tests (0.5 mL)

EQUIPMENT REQUIRED FOR BOTH METHODS

Flow cytometer (See Instrument Requirements section) or Fluorescence microscope

Low-speed, at least 450 x g, refrigerated centrifuge with swinging bucket rotor to hold test tubes or microtiter plates (see below for sizes)

Ultracentrifuge

Vortex mixer

Ice bath

Test Tube Method

Centrifuge fittings - 12 x 75 mm test tube holders

12 x 75 mm test tubes

Transfer pipets

Coverslips (22 x 22 mm)

Microscope slides (3" x 1" x 1 mm)

Microtiter Plate Method

"V" bottom, vinyl, flexible, 96-well (8.5 x 12.7 cm) microtiter plates

Plastic plate covers

Centrifuge carriers for microtiter plates

REAGENT PREPARATION

Prepare the suspension of blood cells and stock solutions. (Refer to RECONSTITUTION and SPECIMEN COLLECTION AND PREPARATION sections.) An appropriate isotypic control (in this case, MslgG1) should be run with each sample.

PROCEDURE

Test Tube Method

1. For each sample, label two 12 x 75 mm test tubes, one for the monoclonal antibody and the other for the appropriate isotypic control. Place 1 x 10⁶ cells from the mononuclear cell preparation in each test tube and

- centrifuge at 2-8°C at 400-450 x g for 4 minutes. Aspirate and discard the supernatant.
- Add 200 µL of COULTER CLONE monoclonal antibody working solution or 200 µL of control working solution into the appropriately labeled test tubes. Vortex gently. Incubate the reaction mixtures at 2-8°C for 30-35 minutes.
 - Wash each reaction mixture with 1 mL of 2-8°C wash medium and centrifuge at 2-8°C at 400-450 x g for 4 minutes. Aspirate carefully and discard the supernatant. Gently disrupt cell pellets on the vortex. Repeat.
 - After the second wash, aspirate carefully and discard the supernatant. Add 200 µL of GAM-FITC working solution to each cell pellet. Gently disrupt cell pellets on the vortex. Incubate at 2-8°C for 30-35 minutes.
 - At the end of 30 minutes, wash three times with 1 mL of 2-8°C resuspension medium. Each time centrifuge at 2-8°C at 400-450 x g for 4 minutes. Aspirate carefully and discard the supernatant. Gently disrupt cell pellets on the vortex.
 - After third wash, resuspend cells by adding 1 mL of 2-8°C resuspension medium to each test tube. Transfer into appropriate containers for fluorescence microscopy or flow cytometry analysis. To ensure maximum viability, analyze stained cells promptly.

Microtiter Plate Method

- Adjust the concentration of the mononuclear cell preparation to 1×10^5 cells/200 µL with PBS and dispense that volume into duplicate microtiter plate wells, one for the monoclonal antibody and one for the appropriate isotypic control.
- Centrifuge the microtiter plates at 2-8°C at 400-450 x g for 5 minutes.
- Remove the supernatant from each well by aspiration with a Pasteur pipet having a fire-polished and slightly bent tip. Insert the pipet tip into the well only as far as the lower ledge, which permits efficient removal of all supernatant without disturbing the cell pellet.
- Disrupt each cell pellet by carefully placing the lid on the tray and gently, but vigorously, pressing the microtiter plate "V" bottom onto the top of a vortex at an approximate setting of 8 or 9. All areas of the plate should be moved so that they come in contact with the vortex head. Vortex mixing should continue until all cells are resuspended.
- Add 200 µL of COULTER CLONE monoclonal antibody or control working solutions into alternate wells and gently agitate. Incubate at 2-8°C for 30-35 minutes.
- Centrifuge the microtiter plates at 2-8°C at 400-450 x g for 5 minutes.
- Aspirate carefully and discard the supernatant. Disrupt cell pellets on the vortex mixer as in step 4.
- Add 200 µL of 2-8°C wash medium to each well and centrifuge at 2-8°C at 400-450 x g for 5 minutes.
- Aspirate carefully and discard the wash medium. Disrupt cell pellets on the vortex.
- Add 200 µL of GAM-FITC working solution to each well. Mix gently. Incubate at 2-8°C for 30-35 minutes.
- Centrifuge the microtiter plates at 2-8°C at 400-450 x g for 5 minutes. Wash cell pellets twice as in steps 8 and 9 using 200 µL resuspension medium.

Fluorescence Microscopy Analysis

- Transfer 200 µL of each final cell suspension to test tubes containing 20 µL of 10% formaldehyde in PBS. Place one drop of fixed cells on a microscope slide. Cover with a 22 x 22 mm coverslip avoiding air bubbles. Seal with stopcock grease and examine by fluorescence microscopy promptly.
- Count all the cells in the field. Record the number of all lymphocytes by phase-contrast differential. Examine the cells under fluorescent light (488 nm filter). Record the percentage of fluorescent lymphocytes by switching between phase and fluorescent illumination.

- Refer to QUALITY CONTROL PROCEDURE for description of how the isotypic control is used in the analysis of fluorescence microscopy and flow cytometry results.

Interpretation of Microscopy Results

CAUTION: Results may vary due to type of microscope, light source, age of bulb, filter assembly and filter thickness.

Counts are made of lymphocytes (peripherally stained cells only). One hundred cells are counted and + (green) or - (not green) are enumerated.

$$\%T11+ = \frac{\text{Number of fluorescent lymphocytes}}{\text{Total lymphocyte count (+ and - cells)}} \times 100$$

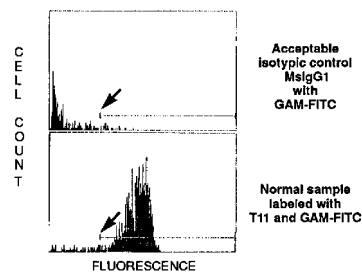
This value expresses T11+ cells as a percentage of the total lymphocyte population.

Flow Cytometry

CAUTION: If the laser on the flow cytometer is misaligned or the gates improperly set, results may be erroneous.

- Analyze unfixed cells on a flow cytometer properly standardized and gated on lymphocytes according to the Product Manual. To ensure maximum viability, analyze stained cells promptly.
- The following histograms are examples of normal samples analyzed on a COULTER EPICS™ Profile™ flow cytometer and gated on lymphocytes. The cursor (á) was set to gate out 98 ±1% nonspecific staining using the isotypic control. Fluorescence to the left of the cursor is nonspecific staining and to the right is counted as specific staining.
- Refer to QUALITY CONTROL PROCEDURE for a description of how the isotypic control is used in the analysis of fluorescence microscopy and flow cytometry results.

Indirect Cell Surface Staining



ABSOLUTE COUNTS

To calculate Absolute Counts use the following formula:

$$\text{Absolute Counts} = \text{Total White Blood Cell Count} [\text{cells}/\text{mm}^3 \text{ (or cells}/\mu\text{L)}] \times \% \text{ Lymphocytes} \times \% \text{ Positively-stained Cells}/10^4.$$

QUALITY CONTROL PROCEDURE

A normal, apparently healthy donor should be run as a control to ensure proper working conditions. Normal ranges should be established within a local population of normal donors.

Specific and/or nonspecific antibody Fc binding to monocytes and granulocytes in a sample can be excluded by proper gating on lymphocytes on the flow cytometer and by morphological characteristics on the microscope by phase contrast.

An appropriate COULTER CLONE isotypic control is used to negate nonspecific antibody Fc binding to lymphocytes in each sample. By flow cytometry, the brightly fluorescent

positively-stained lymphocyte population is measured in gates set to exclude the low level of nonspecific fluorescence. By microscopy, the nonspecific, dimly fluorescent lymphocytes are distinguished visually from the brightly fluorescent positively stained cells.

Nonspecific fluorescence above the background (when cursor is set to gate out 98 ±1% nonspecific staining) is usually limited to 1-2% in normal individuals. If the background level above the cursor for any control sample is greater than 1-2%, test results may be erroneous.

LIMITATIONS

- For optimal results, blood samples should be stained within 6 hours of collection. Retain samples in blood collection tubes at room temperature prior to staining and analyzing. Do not refrigerate. Stored or refrigerated samples may give aberrant results. To ensure maximum viability, analyze stained cells promptly.
- Certain patients may present special problems due to altered or very low numbers of certain cellular populations.
- Results depend upon proper isolation of leukocytes. Prolonged contact of mononuclear cells with gradient separation medium may reduce cell viability. Remove and wash cells within 5 minutes after centrifugation. Prolonged exposure of whole blood samples to lytic reagents may cause white cell destruction.
- Cells separated from whole blood by means of density gradients such as Ficoll-Paque may not have the same relative concentrations of cells as unseparated blood. This may be relatively insignificant for samples from individuals with normal white blood cell counts. In leukopenic patients, the selective loss of specific subsets may affect the accuracy of the determination.
- Incomplete gradient separation may occur in diseases marked by changes in leukocyte size or may be due to the separation technique. Do not use the preparation if a clear-cut interfacial layer of mononuclear cells does not appear after centrifugation, or the sample has excessive erythrocytes, debris, immature myeloid cells, or granulocyte contamination. Repeat the separation procedure.
- Cryopreserved cells must have a viability of at least 85% to be used with these reagents or incorrect results may occur.
- Abnormal states of health are not always represented by abnormal percentages of certain leukocyte populations. An individual in an abnormal state of health may show the same leukocyte percentages as a healthy person. Use test results in conjunction with clinical and other diagnostic data.
- When using whole blood procedures, all red blood cells may not lyse under the following conditions: nucleated red blood cells, abnormal protein concentration or hemoglobinopathies. This may cause falsely decreased results due to unlysed red blood cells being counted as leukocytes.
- Results obtained with fluorescence microscopy may vary due to type of microscope, light source, age of bulb, filter assembly and filter thickness.
- Results obtained with flow cytometry may be erroneous if the laser on the flow cytometer is misaligned or the gates are improperly set.
- Due to an unacceptable variance among the different laboratory methods for determining absolute lymphocyte counts, an assessment of the accuracy of the method used is necessary.

EXPECTED VALUES

Blood samples were collected from a population of apparently healthy males and females. This population included adults from a variety of races ranging in age from 19 to 65 years. Samples were stained with COULTER CLONE T11 monoclonal antibody and COULTER CLONE GAM-FITC. Normal T11+ cell values determined by flow cytometry (COULTER EPICS Profile flow cytometer)

ranged for mononuclear cell preparations between 53 and 72% and for whole blood (gated on lymphocytes only) between 69 and 89%. White blood cell counts were obtained with a COULTER S-Plus™ IV instrument.

These are intended as representative values only. Each laboratory should establish its own expected values for normal donors.

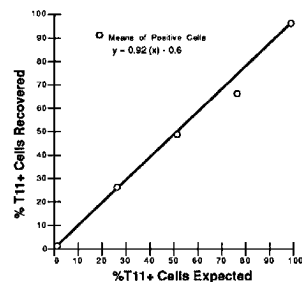
PERFORMANCE CHARACTERISTICS

SPECIFICITY

The CD2 antigen is an early, lineage-specific 'pan T cell' cell surface antigen and normally is present on some bone marrow prothymocytes, on over 95% of thymocytes, on all peripheral T lymphocytes and on a subpopulation of natural killer cells.^{1,2,5} Once present, the CD2 antigen is expressed continuously throughout T lymphocytes differentiation.⁵ The CD2 antigen is not detected on peripheral blood B lymphocytes, monocytes, granulocytes or platelets.² Final release criteria for each lot of COULTER CLONE T11 monoclonal antibody also includes screening on a B-cell line (B cell Burkitt's lymphoma) to rule out any cross reactivity to human B lymphocytes. This cell line exhibits 85-100% reactivity with COULTER CLONE B1 monoclonal antibody (B cell specific) and shows no reactivity with COULTER CLONE T11 monoclonal antibody.

LINEARITY

Dilutions were made using a mixture of T11+ (PB55) and T11- (PB11) cell lines to represent 100, 75, 50, 25, and 0 % T11+ lymphocytes in a standard reaction volume containing 10⁶ total cells/mL. Cells were stained with COULTER CLONE T11 and COULTER CLONE GAM-FITC monoclonal antibodies and analyzed by flow cytometry.



CORRELATION

Comparison of COULTER CLONE T11 monoclonal antibody assay with sheep red blood cell (SRBC) rosetting assay for T lymphocytes using mononuclear cell preparations derived from normal blood samples.

Method	n	Mean % T+	±1 SD
CC T11 (microscopy)	69	73	10
SRBC Rosettes	69	73	10
CC T11 (flow cytometry)	39	63	10
SRBC Rosettes	39	75	11

PRECISION

Comparison of COULTER CLONE T11 monoclonal antibody assay with sheep red blood cell (SRBC) rosetting assay for T lymphocytes using mononuclear cell preparations derived from abnormal blood samples.

Method	n	Mean % T+	±1 SD
CC T11 (microscopy)	61	57	24
CC T11 (flow cytometry)	61	53	23
SRBC Rosettes	31	58	26

Within Day

Thirty-one replicate measurements were performed for each of three levels of T11 lymphocyte concentrations by a fluorescent microscope or a COULTER EPICS Profile flow cytometer on the same day. A T11+ (PB55) cell line was diluted with a T11- (PB11) cell line to obtain the different concentrations. Cells were stained with COULTER CLONE T11 and COULTER CLONE GAM-FITC monoclonal antibodies. Values are expressed in terms of a percentage of the total lymphocyte count.

Method	Level	Mean % T+	±1 SD	%CV
Microscopy	1	17	2	12
	2	39	3	8
	3	72	3	4
Flow Cytometry	1	32	2	6
	2	56	2	3
	3	84	1	1

SELECTED REFERENCES

- Bernard A, Boumsell L, Dausset J, Milstein C and Schlossman SF, eds: 1984. Leukocyte Typing, New York: Springer-Verlag. p. 26, 28, 41-42, 196, 201, 215-216.
- McMichael AJ, ed: 1987. Leukocyte Typing III, Oxford: Oxford University Press. p. 38-40, 42, 106-107, 116, 199, 302-306, 308, 315, 475.
- Reinherz EL, Haynes BF, Nadler LM and Bernstein ID: 1986. Leukocyte Typing II, New York: Springer-Verlag. Vol. 1, p. 6, 16, 364-365.
- Reinherz EL and Schlossman SF: 1980. The differentiation and function of human T lymphocytes. Cell 19: 821-827.
- Nadler LM, Anderson KC, Marti G, Bates M, Park E, Daley JF and Schlossman SF: 1983. B4, a human B lymphocyte-associated antigen expressed on normal, mitogen-activated, and malignant B lymphocytes, J Immunol 131: 244-250.
- Reinherz EL and Schlossman SF: 1981. The characterization and function of human immunoregulatory T lymphocyte subsets. Immunol Today 2: 69-75.
- Koepke JA and Landay AL: 1989. Precision and accuracy of absolute lymphocyte counts. Clin Immunol Immunopathol 52: 19-27.


PRODUCT AVAILABILITY

COULTER CLONE T11 Monoclonal Antibody
PN 6602137 -100 tests (0.5 mL)

TRADEMARKS

Beckman Coulter logo, COULTER, COULTER CLONE, EPICS, Profile and S-Plus are trademarks of Beckman Coulter, Inc.

For additional information, or if damaged product is received, call Beckman Coulter Customer Service at 800-526-7694 (USA or Canada) or contact your local Beckman Coulter Representative.

 Beckman Coulter, Inc.
4300 N. Harbor Blvd.
Fullerton, CA 92835
www.beckmancoulter.com

Printed in USA
Made in USA

© 2008 Beckman Coulter, Inc.
All Rights Reserved